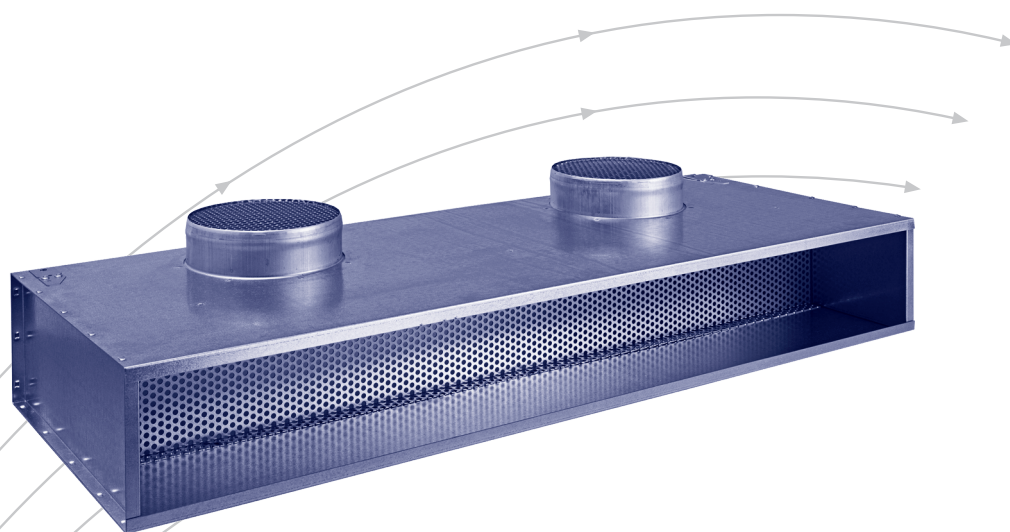


Plenum box

for DG and DGL



TROX[®] TECHNIK



TROX HESCO Schweiz AG
Walderstrasse 125
Postfach 455
CH - 8630 Rüti ZH

Tel. +41 55 250 71 11
Fax +41 55 250 73 10
www.troxhesco.ch
info@troxhesco.ch

Contents · Application · Execution

Contents

Application · Execution	2
Execution · Installation	3
Safety instructions	4

Execution

The plenum boxes are made of galvanized steel sheet. With the supply air plenum boxes in principle a fixed resistance is inserted. Thus an even air distribution in the passage is reached.

We differentiate between model no. 1 and no. 2:

Model No. 1

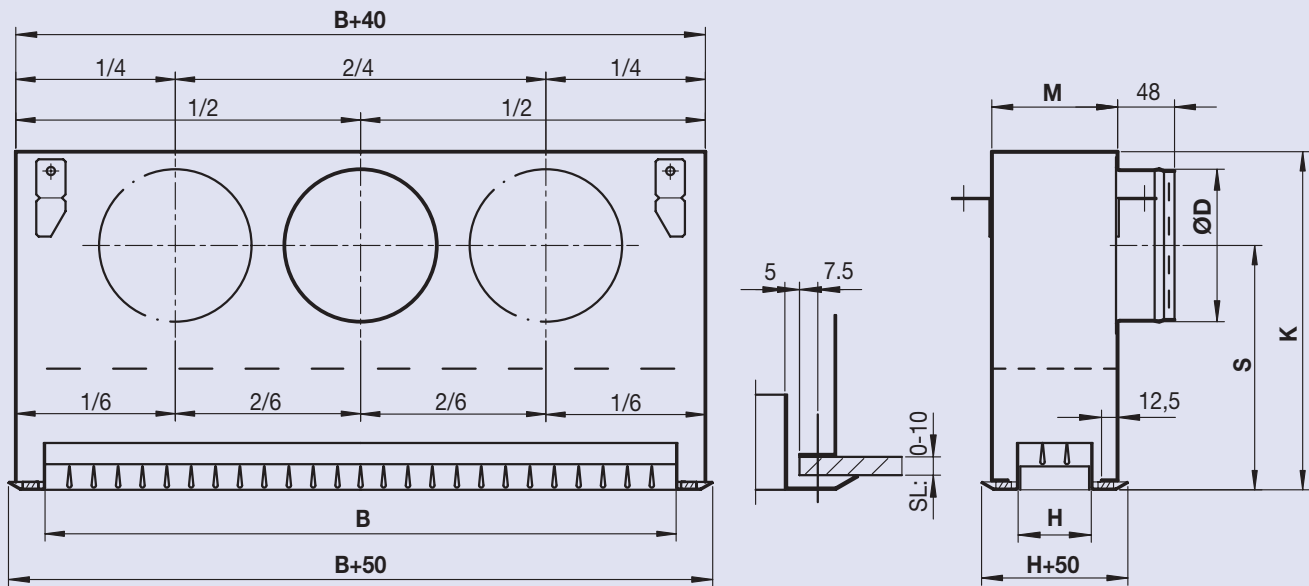
with **inwards** bending, thus suitably for **screws and screwless mounting** of the diffuser.

Type ZK1DG: for supply air, with inwards bending, for DG(L)1 and DG(L)5P

Type AK1DG: for exhaust air, with inwards bending, for DG(L)3 and DG(L)8

Application

Plenum boxes are used, where the TROX HESCO diffusion grilles cannot be built directly into the channel or spigot. Normally the plenum boxes are connected by flexible ducts (hoses) with the forward channel.



H = 50 M = 86				H = 100 M = 136				H = 150 M = 186				H = 200 M = 236				H = 250 M = 286				H = 300 M = 336																					
B	K	max ØD	S	K	max ØD	S	K	max ØD	S	K	max ØD	S	K	max ØD	S	K	max ØD	S	K	max ØD	S																				
200	270	1x149 evtl. 1x159	180 175	340	1x199	211 243	370	1x249 evtl. 2x224	229 242	370	1x249 evtl. 2x199	229 254	345	2x224 evtl. 3x199	217 239	345	2x249 evtl. 3x224	204 217	345	3x224 evtl. 4x199	217 239	204 204																			
300					2x149																		180	2x224	211	2x249	229	2x249	229	2x249	229	2x249	229	3x224	217	4x224	217	4x249	204		
400					1x149																		180	1x224	211	1x249	229	1x249	229	1x249	229	1x249	229	2x224	217	2x249	204	2x249	204		
500					evtl. 1x159																		175	evtl. 2x159	243	evtl. 2x224	242	evtl. 2x224	242	evtl. 2x224	242	evtl. 2x199	254	evtl. 3x199	239	evtl. 3x224	217	evtl. 4x199	239	evtl. 4x249	204
600					2x149																		180	2x224	211	2x249	229	2x249	229	2x249	229	2x249	229	3x224	217	3x224	217	4x224	217	4x249	204
750					evtl. 2x159																		175	evtl. 2x224	211	evtl. 3x224	242	evtl. 3x224	242	evtl. 3x224	242	evtl. 4x224	242	evtl. 4x224	242	evtl. 3x249	204	evtl. 3x249	204	5x249	204
900					3x149																		180	3x199	224	3x249	229	3x249	229	3x249	229	4x249	229	4x249	229	5x249	204	5x249	204	5x249	204
1000					evtl. 3x159																		175	evtl. 3x224	211	evtl. 4x224	242	evtl. 4x224	242	evtl. 4x224	242	evtl. 4x249	242	evtl. 4x249	242	5x249	204	5x249	204	6x249	204
1250					3x149																		180	3x199	224	3x249	229	3x249	229	3x249	229	4x249	229	4x249	229	5x249	204	5x249	204	5x249	204
1500					evtl. 3x159																		175	evtl. 3x224	211	evtl. 4x224	242	evtl. 4x224	242	evtl. 4x224	242	evtl. 4x249	242	evtl. 4x249	242	5x249	204	5x249	204	6x249	204
1750	3x149	180	3x199	224	3x249	229	3x249	229	3x249	229	4x249	229	4x249	229	5x249	204	5x249	204	5x249	204																					
2000	evtl. 3x159	175	evtl. 3x224	211	evtl. 4x224	242	evtl. 4x224	242	evtl. 4x224	242	evtl. 4x249	242	evtl. 4x249	242	5x249	204	5x249	204	6x249	204																					

Execution · Installation

Model no. 2

with **outward bending**, thus suitably **only for fixation with screws** of the diffuser.

Type ZK2DG: for supply air, with outward bending, for DG(L)1 and DG(L)5P

Type AK2DG: for exhaust air, with outward bending, for DG(L)3 and DG(L)8

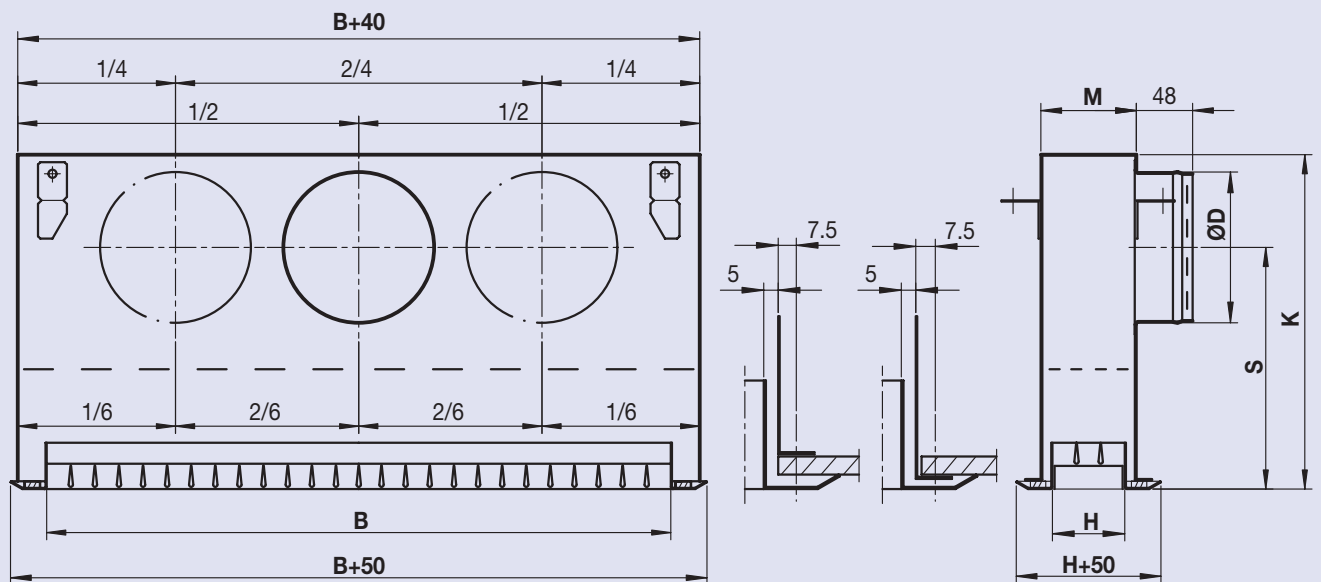
Installation instruction

The plenum boxes (incl. DG) cannot be installed from down. The ceiling plate must be in two parts.

Special executions (on request)

- other dimensions of the plenum box, numbers of spigots and diameters
- plenum boxes for DG- and DGL-continuous diffusion grilles ($B > 2000$ mm)
- mounting angle for suspension from the ceiling
- spigots delivered separately
- isolated plenum boxes

Technical datas and prices on request.



B	H = 50 M = 61			H = 100 M = 111			H = 150 M = 161			H = 200 M = 211			H = 250 M = 261			H = 300 M = 311															
	K	max ØD	S	K	max ØD	S	K	max ØD	S	K	max ØD	S	K	max ØD	S	K	max ØD	S													
200	282	1 × 149	192	352	1 × 199	223	382	1 × 249	241	382	1 × 249	241	357	2 × 224	229	357	2 × 249	216													
300					ev. 1 × 159														187	ev. 2 × 159	243	ev. 2 × 224	254	ev. 2 × 199	266	ev. 3 × 199	251	3 × 224	229	ev. 4 × 199	251
400					2 × 149														192	2 × 224	223	2 × 249	241	2 × 249	241	4 × 224	229	4 × 249	216		
500					ev. 2 × 159														187	ev. 3 × 224	254	ev. 4 × 224	254	ev. 3 × 249	241	5 × 249	216	5 × 249	216		
600					3 × 149														192	3 × 199	236	3 × 249	241	4 × 249	241	5 × 249	216	6 × 249	216		
750					ev. 3 × 159														187	ev. 3 × 224	223	ev. 4 × 224	254								
900																															
1000																															
1250																															
1500																															
1750																															
2000																															

Safety instructions

Safety instructions



CAUTION!

Damage to the product due to improper handling. Check the device for damage and contamination prior to operation!

Improper handling may lead to considerable material damage of the product.

- Do not use any acid or abrasive cleaning agents.
- Adhesives from sticky tape may lead to colour damage.
- Excessive moisture may lead to colour damage and corrosion.
- Use only cleaning agents, greases and oils that are expressly specified.



CAUTION!

Risk of injury from sharp edges and corners, ridges and thin-walled sheet metal parts!

- Proceed carefully with all work.
- Wear protective gloves, safety shoes and protective helmet.



WARNING!

Danger from incorrect use. Misuse of the product may lead to dangerous situations.

The product must not be used:

- in areas subject to explosion hazards;
- in the open air without sufficient protection against weather effects;
- in atmospheres that may have a damaging and/or corrosive effect on the product due to scheduled or unscheduled chemical reactions.